



ANTARES



PUMP - ACTION SHOTGUN INSTRUCTION MANUAL

12 Ga



READ THE INSTRUCTIONS AND
WARNINGS IN THIS MANUAL CAREFULLY
BEFORE USING THIS FIREARM

GUN SAFETY RULES

Observe these rules of safe gun handling.

1. Always keep the muzzle pointed in a safe direction. Watch the muzzle at all times: never point a gun, accidentally or intentionally, at any person or anything you do not intend to shoot. Identify the target before shooting; do not shoot at sounds.
2. Always treat a gun as if it is loaded – it may be!
3. Keep your finger off the trigger while operating the action and at all other times until you are ready to shoot.
4. Keep the safety “on” or in the “safe” position at all times until you are ready to fire. Do not rely on your gun's safety, the safety on any gun is a mechanical device and is not intended as a substitute for common sense or safe gun handling.
5. Learn how your gun functions and handles. If you do not thoroughly understand the proper use and care of your gun, seek the advice of someone who is knowledgeable.
6. Do not alter or modify any part of the firearm.
7. Store guns unloaded, separate from any ammunition, and out of the reach of children.
8. Be sure the barrel is clear of any obstructions before loading. Make it a habit to check the barrel every time before loading.
9. Be sure you have and use the proper ammunition. A 20 gauge shell will enter a 12 gauge chamber far enough so that a 12 gauge shell can be loaded behind it. Also, a 3 inch shell may fit into a 2 $\frac{3}{4}$ inch chamber, but the crimp at the mouth of the shell will unfold into the forcing cone. If either of these things occur and you fire the gun, the gun will explode, damaging the gun and possibly causing serious injury or death to you and those around you.
10. Wear protective shooting glasses and adequate ear protection when shooting.
11. Never climb or jump over anything, such as a tree, fence, or ditch, with a loaded gun. Open the barrel, remove the shells and hand the gun to someone else or place it on the ground on the other side of the obstacle before crossing it yourself. Do not lean a gun against a tree or other object; it could fall and possibly discharge.
12. Do not shoot at a hard surface or at water. Bullet and shot can ricochet or bounce off and travel in unpredictable directions with great velocity.
13. Never transport a loaded gun. DO not place a loaded gun into a vehicle. The gun should be unloaded and placed into a case when not in use.
14. Never drink alcoholic beverages before or during shooting.

ABOUT YOUR PUMP SHOTGUN

Your shotgun is manually operated. Once a shell has been fired, the locking lug in the bolt moves down, unlocking the gun. The forearm can then be moved to the rear and forward again, ejecting and loading a new shell.

To open the bolt without firing the gun, depress the action bar lock, located just beside and forward of the trigger. This allows for opening the action without dry firing.

The magazine tube will only accept 7 pcs, 2 3/4. shells or 4 pcs, 3" shells

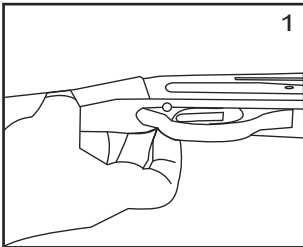
Please check if your shotgun model includes mobile chokes.

SAFETY SWITCH OR BUTTON

The safety is designed to stop the trigger mechanism. **DON'T RELY ON YOUR GUN'S SAFETY. TREAT EVERY GUN AS IF IT WERE LOADED AND READY TO FIRE.** The safety on any gun is a mechanical device, and it is not intended as a substitute for common sense or safe gun handling. Always keep the muzzle pointed in a safe direction.

A- The safety is located behind the trigger, and provides protection against accidental or unintentional discharge under normal usage when properly used.

B- To engage the safety, push the button so that it protrudes from the right side of the gun and the **RED BAND MARKING CAN NOT BE SEEN.** The safety should always be in the "on" or "safe" position until you intend to fire the gun. (Photo 1)

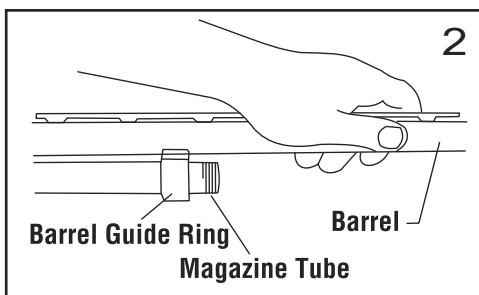


C- When you are ready to fire the gun, press the safety button to the "off" position so that the safety protrudes from the left side of the gun and the RED BAND MARKING IS SHOWING.

DANGER: The gun will fire when the trigger is pulled intentionally or accidentally when the RED BAND MARKING IS SHOWING.

ASSEMBLY

1. Remove the magazine cap.
2. Press upward on the action bar lock. Pull the forearm approximately half way rearward.
3. Hold the barrel ahead of the barrel guide ring (See picture 2).



Slide the barrel guide ring over the magazine tube. Clean the barrel following the instructions on Page 8.

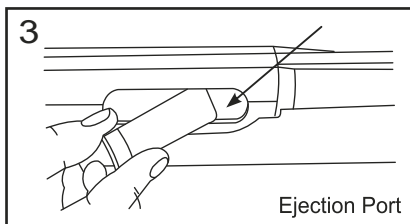
5. Press upward on the action bar lock.
6. Align the ejector on the inside of the barrel with the slot in the bolt.
7. Carefully set the barrel into the receiver. **DO NOT FORCE IT!**
8. Replace the magazine cap. Tighten.

DISASSEMBLY

1. Make sure the gun is unloaded!
2. Point firearm in a safe direction
3. Push up on the action bar lock.
4. Slide forearm forward half way.
5. Unscrew and remove the magazine cap.
6. Pull the barrel carefully out of the receiver.
7. Push the carrier forward.
8. Press and hold the action bar lock.
9. Slide the forearm forward and off the magazine tube.

LOADING YOUR SHOTGUN -ONE SHELL ONLY-

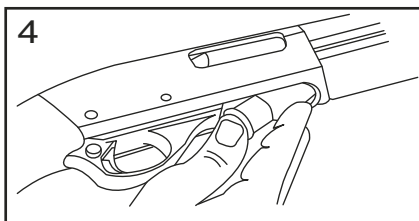
1. Put safety in the "on" position.
2. Point the gun in a safe direction.
3. Push up on the action bar lock.
4. Pull the forearm completely to the rear and carefully hold it for the return spring models
5. Put one shell through the ejection port, making sure it is the correct gauge and length.
(See picture 3)
6. Push the forearm forward and close the action.



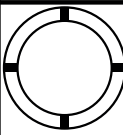
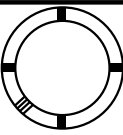
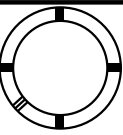
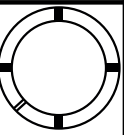
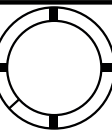
FULLY LOADING YOUR SHOTGUN

1. Put safety in the "on" position.
2. Point the gun in a safe direction.
3. Push up on the action bar lock.
4. Pull the forearm completely to the rear and carefully hold it for the return spring models
5. Put one shell through the ejection port, making sure it is the correct gauge and length.
(See picture 3)
6. Push the forearm forward and close the action.
7. Push a shell upward against the bottom of the carrier. (See picture 4)
8. Push two (2) to four (4) shells, one at a time, fully forward into the magazine tube.

FOR THE MODELS WITH RETURN SPRING IN THE FOREND, YOU DO NOT NEED TO PUSH THE FOREARM TO CLOSE THE ACTION, THIS WILL BE DONE AUTOMATICALLY, BY THE HELP OF THE SPRING. THE SPRING WILL CLOSE THE ACTION AT A VERY FAST RATE, USE CAUTION AND WATCH OUT FOR YOUR FINGERS AND LOOSE CLOTHING.



**USAGE OF CHOKE TUBES
(IF YOUR SHOTGUN INCLUDES)**

	SKEET	IC	M	IM	F
CHOKE TUBE					
BBSL	CL	★ ★ ★ ★	★ ★ ★ ★	★ ★	★

The choke controls how open or tight the pattern of the shot will be. The chart below lists the chokes available (from open to tight), and the core spending marks that indicate the specific choke.

Never fire your gun or run cleaning tools through a barrel that uses a choke tube without having a choke installed. The threads of the choke tube and the internal threads of the barrel should be cleaned after each use and before installation of the tube.

To install a tube, insert the tube into the top of the barrel and tighten with your fingers. Once the tube is finger tightened, tighten the rest of the way with the appropriate choke tube wrench until the tube is snug. **DO NOT** over tighten or forcefully tighten with the wrench.

**IMPORTANT
USAGE OF STEEL SHOT**

The choke (before constriction) in all modern shotguns has been established based on the pattern performance of shot shells loaded with lead shot. When using steel shot shells, you will notice a different performance in pattern density versus the established lead shot pattern, because the steel shot is harder and lighter than lead shot.

You should be aware of the following differences and cautions:

Never shoot steel shot loads in a full choked barrel or an improved modified choked barrel. Doing so, may cause the barrel to swell or rupture. In general, steel shot fired with a modified choke will produce the equivalent of a lead full choke pattern. This will be true of all steel shot sized up to and including no. 2. The established improved cylinder chokes will produce the equivalent of a (lead) modified pattern.

All steel shot sized larger than no. 2, and including special sized such as F, T, etc., should be used only with improved cylinder chokes. These steel shot sizes, when used in an improved cylinder choke, will produce equivalent to (lead) full choke patterns. The established cylinder choke or bore will produce the equivalent of a modified (lead) pattern. Additional information concerning the use of steel shot is available from the ammunition companies.

MAINTENANCE AND CLEANING

Caution: Make sure the gun is UNLOADED.

1. Make sure the broad, polished finely fitted mating surface of the breech block and receiver is especially clean and lightly oiled with high quality gun oil. Do not use silicone or lanolin (Do not use WD-40).

2. Run an oil patch through the bore with a cleaning rod starting from the breech end. To prevent leading, use a cleaning solvent and brass brush to clean the bore periodically. Follow this cleaning with one or two clean oil patches. Important: If your gun is equipped with choke tubes, do not use a brass brush to clean the barrels without having a choke tube installed. Barrels that utilize choke tubes must also have the choke tubes removed to clean and oil the threads inside the barrel and the choke tubes themselves. This will protect the threads and prevent dirt build up that can cause tubes to become difficult to remove.

Never fire your gun without choke tubes snugly tightened in barrels. Do not over tighten choke tubes. Wipe all exposed metal surfaces with an oiled cloth before storing. Do not squirt or pour oil into the inside mechanism because it may hamper proper functioning. After extended periods of heavy use, your gun should be taken to a qualified gunsmith to have the action disassembled for professional cleaning and lubrication.

3. Care for your wood stock and forearm the same way you would a piece of furniture with the same finish.

STORAGE

Clean thoroughly and oil your gun before storage. Store the gun in a case to prevent scratches and dents. Store your firearm in a dry place to prevent corrosion. Store the gun away from children and in a place where it cannot be obtained by those unauthorized to use it. Always store gun unloaded and separately from any ammunition.

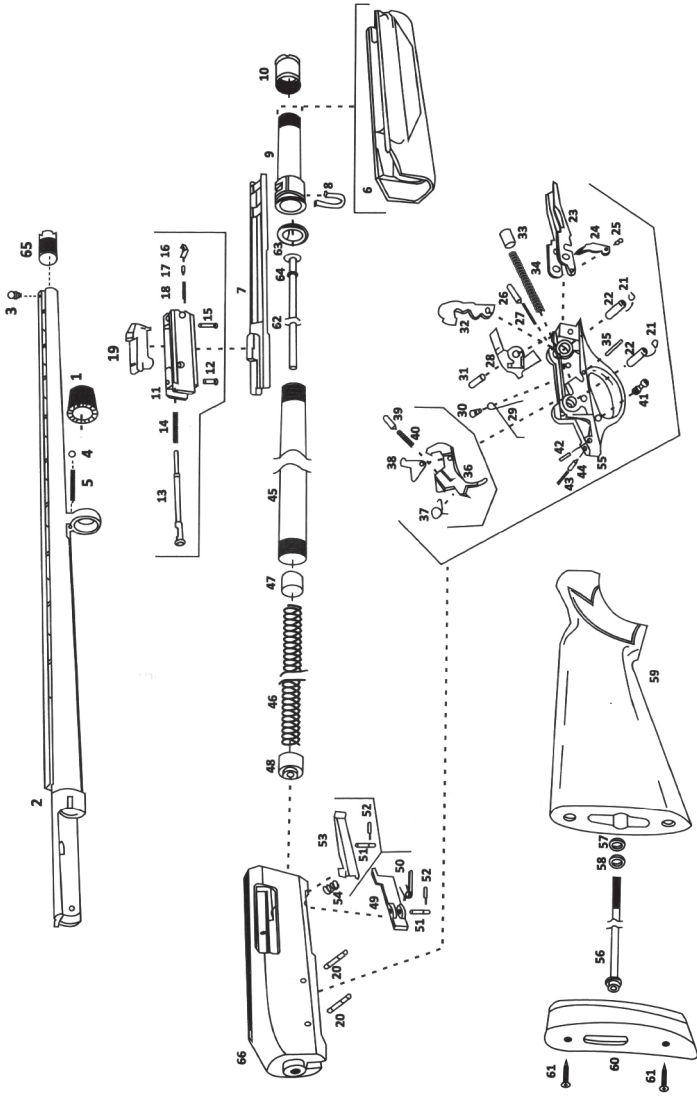
HAZARDOUS MATERIAL WARNING

Discharging firearms in poorly ventilated areas, cleaning firearms, or handling ammunition, may result in exposure to lead and other substances known to cause birth defects, reproductive harm, and other serious injury. Have adequate ventilation at all times. Wash hands thoroughly after exposure.

THANK YOU

Thank you for purchasing a Antares Shotguns. We are sure this gun will bring you years of hunting and/or shooting pleasure. Your satisfaction is the key to our success. Please let us know if we can be of service and relay any observations about your guns performance or appearance.

EXPLODED DIAGRAM



PART NO	DESCRIPTION	PART NO	DESCRIPTION
1	Magazine cap	34	Spring, hammer
2	Barrel	35	Pin, trigger pivot
3	Front bead	36	Trigger
4	Detent, magazine cap	37	Spring, trigger
5	Spring, magazine cap detent	38	Sear
6	Forearm	39	Cap, sear spring
7	Slide arm	40	Spring, sear
8	Clip, slide arm retainer	41	Safety
9	Forearm tube	42	Detent, safety
10	Nut, forearm tube	43	Spring, safety detent
11	Bolt body	44	Pin, safety spring retaining
12	Pin, firing pin retaining	45	Magazine tube
13	Firing pin	46	Spring, magazine
14	Spring, firing pin	47	Magazine spring retaining
15	Pin, extractor retaining	48	Magazine spring follwer
16	Extractor	49	Feed latch
17	Plunger, extractor	50	Spring, feed latch
18	Spring, extractor	51	Pin, latch pivot (2)
19	Locking block	52	Retainer, latch pivot (2)
20	Pin, trigger frame (2)	53	Shell stop
21	"D" ring, trigger frame pin 2	54	Spring, shell stop
22	Tube, trigger frame pin (2)	55	Trigger guar housing
23	Lifter	56	Bolt, stock
24	Lifter dog	57	Washer, flat stock bolt
25	Pin, lifter dog	58	Washer, lock stock bolt
26	Cap, lifter dog spring	59	Stock
27	Spring, lifter dog	60	Recoil pad
28	Slide lock lever	61	Screw, recoil pad (2)
29	Spring, slide lock lever	62	Magazine blocker
30	Stud, slide lock lever spring	63	Retainer, magazine blocker
31	Pin, hammer pivot	64	"E" clip, magazine blocker
32	Hammer	65	Choke tube
33	Cap, hammer spring		

WARRANTY AND CONDITIONS

Any legitimate purchaser of a ANTARES gun is entitled, under the following conditions, to have it repaired free of charge (parts and labor) in the event of defects occurring that can be shown to be due to defective materials or manufacture. This warranty is valid for three (3) years from the date of delivery of the product to its initial purchaser.

Under the terms of this warranty no other intervention will be accepted by ANTARES or its distributors and in particular no indemnity will be paid for loss of use.

This warranty excludes any breakage of the wooden elements where such breakage is not due to an intrinsic defect of the wood.

This warranty shall only apply if, within the aforementioned period of five (5) the purchaser of the gun hands back or returns the allegedly defective gun to an official ANTARES distributor at his/her own cost and risks within fifteen (15) days of said defect or defects and any other documents or cover establishing the place and date of the initial purchase (for example a copy of invoice).

This warranty will not apply where:

1.It is apparent that the alleged defect can reasonably be attributed to normal wear and tear of the gun, intentional damage, negligent maintenance, storage or use or to improper use (such as unsuitable or reloaded ammunition)

2.The gun has been converted or altered in any way.

Under the terms of this warranty, all repairs or replacements shall be affected within a reasonable time scale. All repairs, with or without replacement of parts, must be performed using to correct equipment by an official ANTARES distributor or ANTARES approved service center.

The customer will be advised when the repaired or replacement gun is ready. It will either be held for collection or, if the customer so requests, can be delivered to his home address at his own risk and cost.

Any servicing or repair work carried out under the terms of this warranty shall not extend the warranty period or alter the conditions thereof. However, the repair itself will be guaranteed for a period of one (1) year from the date the repaired gun becomes available.

In the event that the gun is replaced with a new one, the full warranty shall begin, to apply from the moment the replacement gun is handed to the customer.

Custom gunsmithing service or nonstandard alterations are NOT AVAILABLE from ANTARES factory.

WARNING : Before shipping any firearm, be absolutely certain that It Is Unloaded. Do not ship cartridges with a firearms.

SERVICE AGREEMENT AND LIMITED WARRANTY

Antares agrees to service its products free of charge for defects in materials and workmanship in accordance with the service agreement listed below. The obligation of **Antares** under this agreement is limited to the repair or replacement of unserviceable parts and does not cover any incidental or consequential damages. Other than the express warranty contained herein makes no warranties, express or implied.

Antares will repair or replace any unserviceable part(s) for one (1) year from date of purchase and further will supply free parts (Wood not included) for an additional four (4) years in accordance with the above warranty statement provided your firearm had not been altered, abused, willfully damaged, or damaged by overpressure ammunition. This agreement is not transferable; its benefits apply only to the original purchaser.

To obtain free service during the time this agreement is in effect, make sure your firearm is unloaded, and send it to **Antares**

This agreement and the warranties contained herein are void if your registration card is not received with a copy of your sales slip within 30 days from date of purchase

Serial No. _____

Date Purchased: _____

Purchased From: _____

Purchaser : _____



ANTARES

Hamidiye Mh. Süleymanbey Cd. No.53

Beyşehir / KONYA / TÜRKİYE

+90 551 859 4121

info@antaresguns.com

www.antaresguns.com